



airconditioning

HVAC TECHNOLOGY

Taurus Tech - 73-143kW

030-140



ABOUT THE CHILLER

The ICS range of Taurus chillers feature the latest energy-saving Hermetic Scroll Compressors (2/4), and offer a wide temperature range.

The chiller is manufactured to the latest environmental ISO14001 controls and is fully Eurovent Compliant with R410a refrigerant.

ICS INDUSTRIAL COOLING SERVICE

ICS can also supply the following equipment:

- Air Cooled Chillers
- Water Cooled Chillers
- Heat Pump Chillers
- Cooling Towers
- Air Blast Coolers
- Heat Exchangers
- Heaters
- Bespoke Manufacturing
- Pumps & Condensers

BENEFITS

The Taurus Tech provides a wide range of benefits including:

- Multi-scroll technology
- High EER/COP levels, especially at partial loads
- Start-up and operation in even the most adverse conditions
- Reduced noise levels thanks to 3 different acoustic versions
- Flexible modification availability for various applications

TECHNICAL SPECIFICATION

	030	035	040	050	055	060
Cooling capacity kW	73.0	82.7	100.4	114.8	129.3	143.3
Compressor absorbed power kW	22.52	23.53	30.35	34.71	38.65	42.63
Capacity control %	2 steps			4 steps		
Number of refrigerant circuits	1			2		
Number of compressors	2			4		
IPLV/ESEER	4.03/3.8	4.32/4.1	4.36/4.23	3.87/3.68	4.00/3.38	4.24/4.01
Refrigerant	R410A					

Evaporator

	030	035	040	050	055	060
Evaporator operating °C	12.0/7.0	12.0/7.0	12.0/7.0	12.0/7.0	12.0/7.0	12.0/7.0
Evaporator or water flowrate m ³ /h	12.34	14.05	17.14	19.54	22.11	24.5
Fouling factor M ² °C/kW	0.00					
Evaporator pressure drop kPa	40	45	44	45		

Fans

	030	035	040	050	055	060
Number of fans	2			3		
Total nominal airflow m ³ /h	47200	46000	45300	70500	68000	68000
Power absorbed kW	2					

Electrical Data

	030	035	040	050	055	060
Main electrical supply	400/III/50Hz					
Maximum power kW	35	37	45	53	61	64
Maximum intensity (A)	58	64	78	92	102	113
Starting Current (A)	191	193	254	212	245	253

Dimensional Data

	030	035	040	050	055	060
Length mm	2507	2507	2507	3407	3407	3407
Width mm	1110					
Height mm	2120					
Operating weight kg	767	801	950	1137	1186	1211

Maximum external air temperature, refer to cooled water inlet 12°C and outlet water temperature condition at 7°C, ambient temperature 35°C.

Sound levels

	030	035	040	050	055	060
63Hz	51.1	51.1	50.9	56.4	51.9	51.9
125Hz	68.7	68.7	68.5	72.1	69.5	69.5
250Hz	80.2	80.2	80.0	81.0	81.0	81.0
500Hz	81.1	81.1	80.9	82.0	81.9	81.9
1000Hz	81.1	81.1	80.9	83.5	81.9	81.9
2000Hz	78.2	78.2	78.0	79.5	79.0	79.0
4000Hz	70.3	70.3	70.1	71.6	71.1	71.1
8000Hz	59.9	59.9	59.7	59.5	60.7	60.7
Global sound power level dB	86.5	86.5	86.3	88.0	87.3	87.3
Global sound pressure level 10.0m dB (A)	58.5	58.5	58.3	60.2	59.3	59.3

Measurements are taken in accordance with the standard ISO3744.

Sound pressure average value obtained in free field on a reflective surface at a distance of 10m from the condenser coils at a height of 1.6m +/-2 under full load in normal conditions.

Additional services: ICS can provide attenuated equipment and services to help further reduce the impact of our equipment to help meet your specific site requirements.

Sub 5°C Water Applications

When installing a chiller and/or air handling piece of equipment, we would recommend the use of the following mix of Glycol for the systems total volume of fluid.

This will protect the equipment against internal freezing and failure (e.g. 200 litre volume @ 0°C food safe equals 30 litres of Glycol and 170 litres of water).

Weekly checks should be made by the site maintenance engineer/manager to ensure the correct mix is present in the system.

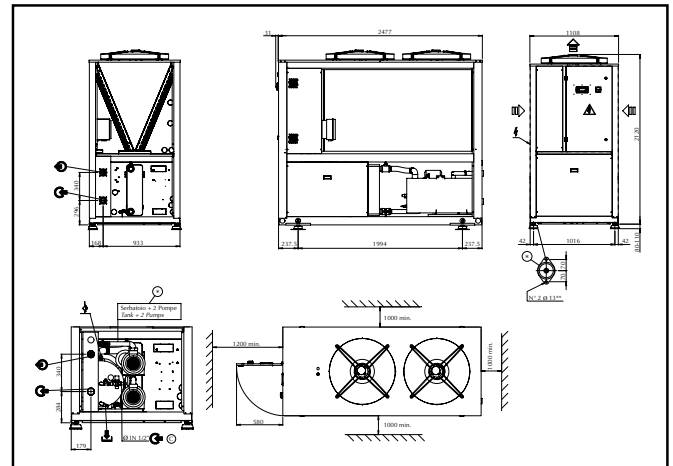
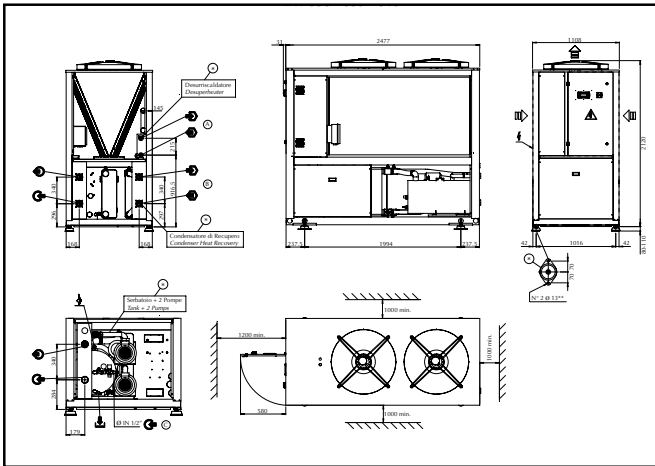
Water/Glycol Recommendations and Guide:

Water temperature			5°C	0°C	-5°C	-10°C	-15°C
Industrial Grade	Mono Ethylene Glycol	% Mix	5	10	20	25	30
Food safe grade	Mono Propylene Glycol	% Mix	10	15	20	25	30
Bio food safe grade (made from vegetable extracts)	Biodegradable Glycol	% Mix	10	15	20	25	30

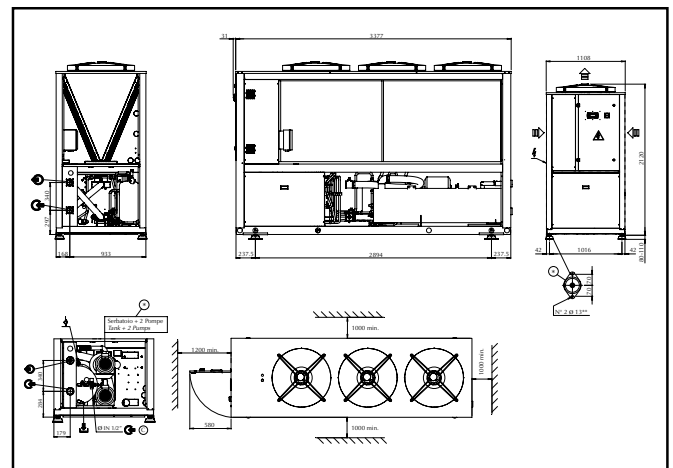
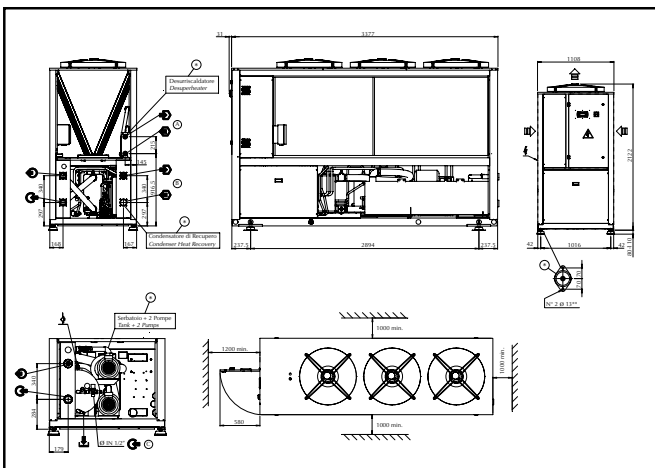
Glycol can be purchased from ICS in 25 litre, 205 litre and 1,000 litre drums.

GA DRAWINGS

030 - 035 - 040



050 - 055 - 060



Head Office South

ICS House, Stephenson Road, Calmore Industrial Estate, Totton, SO40 3RY
T (+44) 23 8052 7300 F (+44) 23 8042 8366

Midlands

Birmingham Science Park, Aston Faraday Wharf, Holt Street, Birmingham B7 4BB
T (+44) 121 326 7771 F (+44) 121 327 4114

North

Floor 2, Caspian House, East Parade, Little Germany, Bradford BD1 5EP
T (+44) 1274 740 877 F (+44) 1274 391 708

Scotland

Unit 5, 53/58 South Avenue, Blantyre Industrial Estate, Blantyre, G72 0XB
T (+44) 1698 723308 F (+44) 1698 723309

Ireland

Unit 2, Kells Enterprise Centre, Cavan Road, Kells, County Meath, Ireland
T (+353) 46 925 2934 F (+353) 46 925 2936



www.icstemp.com

E&OE. All data is subject to change and continuous improvement without notice.
Equipment designed to ISO 9001 and all relevant electrical, pressure and mechanical directives.
© ICS Industrial Cooling 2011. All rights reserved.